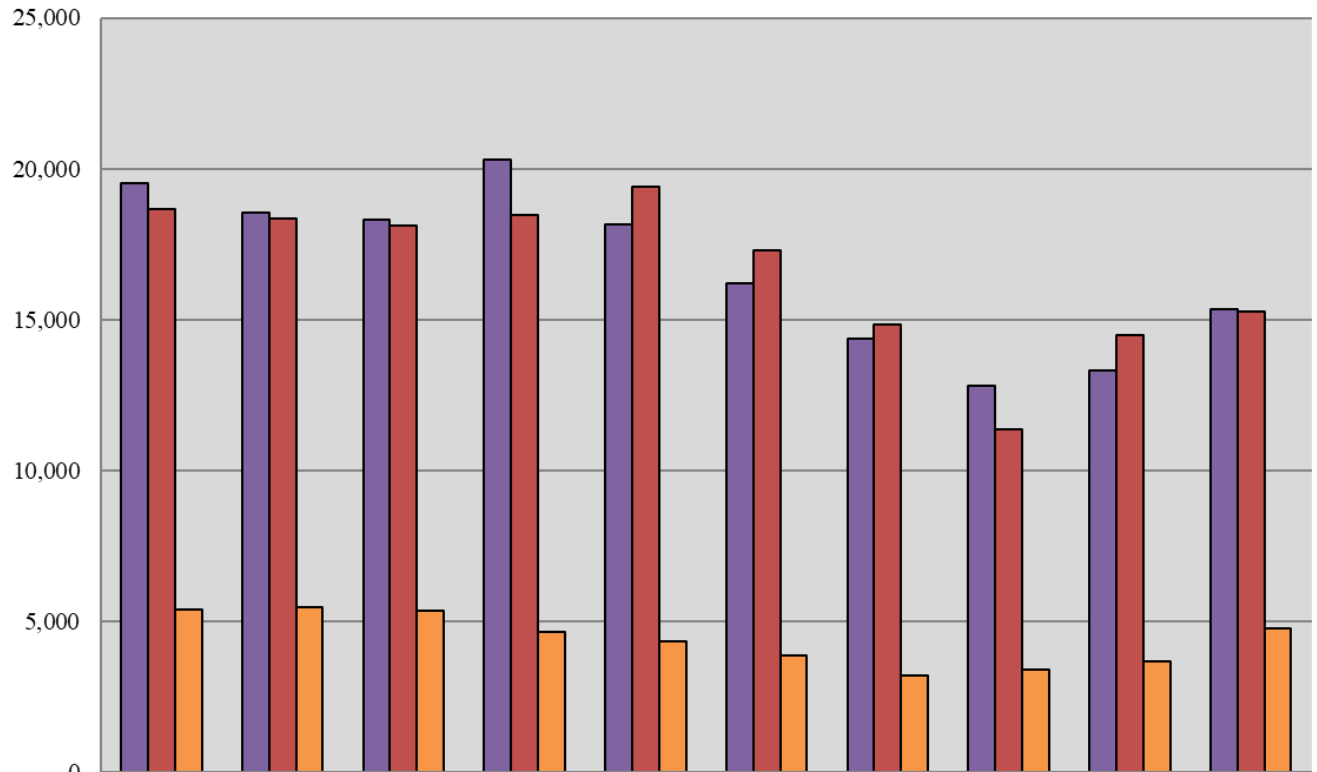


## Superior Court Total 10-Year Caseload Trend



	2014	2015	2016	2017	2018	2019	2020	2021	2022	2023
■ Filings	19,504	18,540	18,292	20,315	18,132	16,211	14,375	12,793	13,309	15,321
■ Dispositions	18,663	18,354	18,109	18,447	19,405	17,298	14,834	11,364	14,487	15,257
■ VOP Filings	5,378	5,465	5,358	4,639	4,307	3,865	3,179	3,402	3,673	4,743

**Fiscal Year**